



Electric  
Pick & Carry  
Cranes



**MC 25S (metric)**

Max Capacity 2,500 kg

RGP Lifting Solutions  
Dealer & Partner of JMG Cranes

Sales & Service Office  
Ecologieweg 16  
3343 LM Hendrik-Ido-Ambacht -  
Netherlands+31 (0) 78 204 92 60  
info@rgpliftingsolutions.eu

Gijs van de Graaf  
+31 651855113

Dick van de Graaf  
+31 613214166

Production Plant  
Via Sito Nuovo 14  
29010 Sarmato (PC) - Italy



vca✓

# MC 25S

- ✓ Sequential telescoping boom
- ✓ Front-wheels drive with counter rotation
- ✓ Tilting head 4 positions (-70°/-35°/0°/+10°)
- ✓ Removable counterweight
- ✓ Usb plug
- ✓ Blocks and hooks lodging on board

### Optionals:

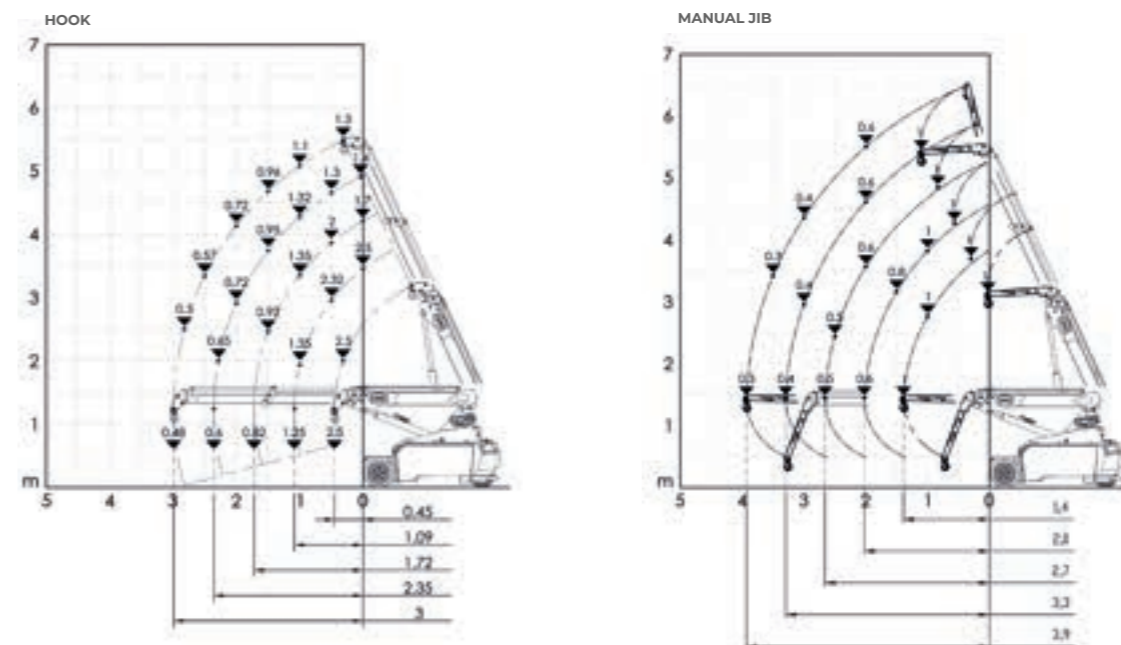
- Hydraulic winch
- Bendable manual extension
- Non-marking tires
- Man bucket
- Atex conversions
- Customized painting
- Tool box



### Technical features

Max Capacity kg	2.500	Front-wheels drive. 2 electric motors AC 2 kW 24V Insulation class H	<b>LMI.</b> Electronic safe load indicator and tilting moment limiter
	Total Kg. 2.400 Removable counterweight Kg. 750	24 V - 420 Ah 8 working hours	Automatic braking system on all wheels
Dimensions mm	2190x900x1610	Front nr. 2 superelastic 18x7-8" Rear nr. 2 superelastic 15x4 1/2-8"	Fabricated from preformed and welded quality steel plate
		Rear Steering angle -90°/+90°	+65°/-15°
			Motor driven pump 3 kW - 24 V AC, Insulation class H

### Load charts



### EU Standards CE

	UNI ISO 4030-2: A1
	2006/42/CE - 2000/14/CE - 2014/30 UE - 2014/35/UE - D.Lgs 262/2002 subsequent modifications
	EN 13000:2014 subsequent modifications

### Dimensions

